



A SERIES

75-135 HP

VALTRA

YOUR WORKING MACHINE

WE WORK HARD TO MAKE HARD WORK EASY

At Valtra our main focus is to understand your needs and provide you with the best tractor experience. If you are looking for a small machine that gets the job done, the A series is your perfect partner. It shares many of the features of its big brothers, but in a very compact form. It is fun to drive, light and agile, without compromising on power. Enter the spacious cabin, take a seat and see for yourself. This machine is built to work.

The award-winning A Series is the perfect example of our design principle, **form follows function**. It offers unrivalled balance between nimble movement and optimal power, both on the ground and with implements. As always with Valtra tractors, the A Series is easy to use and reliable with any task you face.

We always have your best workday in mind, and the real star of the A Series is the cabin and the ergonomics. The comfortable and functional cabin is easy to move in and out of. When comfortably seated, you'll have perfect visibility of your surroundings as well as full control of your work with the new and updated user interface.



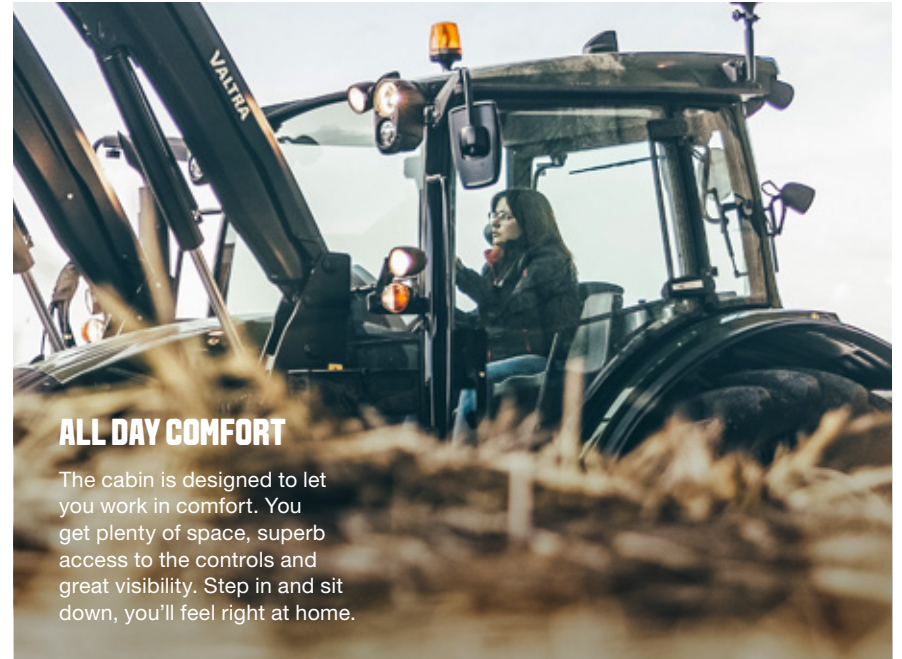
THE SMALL GIANT

The A Series is small in size and big in performance. Wherever you are, from tight spaces to open fields, it gives you the power to get the job done.



ALL DAY COMFORT

The cabin is designed to let you work in comfort. You get plenty of space, superb access to the controls and great visibility. Step in and sit down, you'll feel right at home.



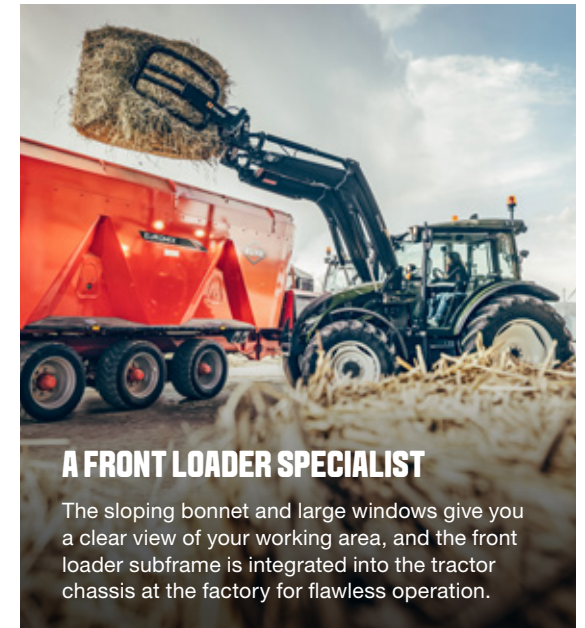
TWO TYPES OF TRANSMISSION

Choose from two transmission options: HiTech4 electronic transmission and GL mechanical transmission. Both are easy to use and help you work without fatigue.



A FRONT LOADER SPECIALIST

The sloping bonnet and large windows give you a clear view of your working area, and the front loader subframe is integrated into the tractor chassis at the factory for flawless operation.



JUMP IN AND GET GOING

The A Series is your working machine. Sit in the driver's seat and you'll see why. The spacious cabin lets you get straight to work, with nothing in your way and everything in easy reach.



2. SEE EXCELLENT ALL-AROUND VISIBILITY

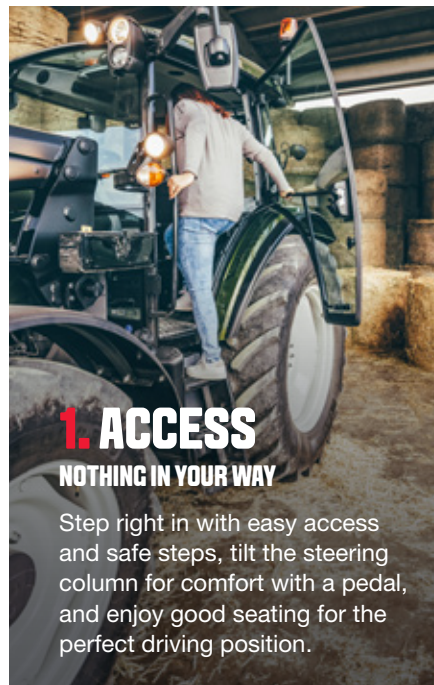
You get great visibility in front and sides, at the rear for implements, and high at the front for front loader work.



With the A Series you get a compact tractor that delivers big productivity and all day comfort. The cabin is ergonomic and quiet, and it gives you excellent visibility in all directions.

With Valtra, you will get exactly the right tractor for your needs. All seven A Series models are

available with easy-to-use GL mechanical transmission. Our popular 105 and 115 horsepower models are also available with HiTech4 four-step powershift transmission, which is controlled electronically. All A Series tractors come with Valtra's renowned shuttle transmission including an integrated handbrake.



1. ACCESS NOTHING IN YOUR WAY

Step right in with easy access and safe steps, tilt the steering column for comfort with a pedal, and enjoy good seating for the perfect driving position.



3. WORK MADE TO BE PRODUCTIVE

The A Series is ergonomically designed, it's easy to use and it has the power you need to put your implements to work.

4. GL MODELS

EASY-TO-USE MECHANICAL TRANSMISSION

A mechanically straightforward design that's easy to use. It gives you a base transmission of 12+12R – or more with the HiTech2/creeper – all implemented so you can work without fatigue.

5. HITECH4 MODELS

ELECTRONIC TRANSMISSION CONTROL

A sophisticated solution with no gear levers and the right speeds to match your work, and still easy to use.

6. POWER HYDRAULICS

GET THE MOST FROM YOUR IMPLEMENTS

The A Series gives you high hydraulic pump capacity for efficient work with implements and the front loader.

7. LOADER FIRST

DESIGNED FOR FRONT LOADER WORK

The balanced chassis makes working with Valtra's high quality front loaders easy and dependable. The great visibility and electronic control make it even better.



8. EASY SERVICE

MADE TO KEEP WORKING

Five fast checks guarantee an uninterrupted workday. All maintenance is easy to do.

9. LOW COST OF OWNERSHIP

EFFICIENT AND PRODUCTIVE

Affordable purchase is just the start of the story; compare the low fuel and service costs against the performance of the machine see how much you profit.

10. CONNECT, CARE & GO

THE A SERIES IS CONNECTED

Follow your tractor's activity with Valtra Connect telemetry solution, enjoy peace of mind with Valtra Care extended warranty contract, and maximise uptime with Valtra Go service contract.

THE FRONT LOADER SPECIALIST

The A Series is designed to give you full control of your tractor and your front loader, so you can work safely and efficiently in all conditions. With its compact size, you get a tight turning radius. And with the large cabin windows and unobstructed view, you get excellent visibility of your load and your surroundings, even with the loader raised. The front loader itself has curved lift rods that follow the tractor bonnet line for even better visibility.



1. Clean and modern beam design with enclosed pipe work
2. Curved parallel lift rods that follow the tractor's bonnet line
3. Excellent visibility and a full view of tools and attachments
4. High pump capacity for efficient front loader work
5. Optional roof window for outstanding front visibility
6. Electrical armrest with joystick to operate the front loader
7. SoftDrive loader suspension and precise self-levelling
8. Lock-and-go system for quick loader attachment and detachment
9. Integrated heavy-duty subframe fitted at the factory



DESIGNED AROUND THE DRIVER

Valtra tractors are designed from the start to help you get more done. Every feature we add and every detail we update is done with ease of use, comfort and convenience in mind.



You might not even notice some details and that's the way we intended it. For example, with noise, it's what's not there that counts. The A Series cabin is designed to have a low noise level of just 75dB. The cab structure is another great example – it's narrow at the front to help you navigate in tight areas like livestock buildings or dense forests and yet it's wide at your shoulder line for maximum working comfort.

A PERFECT VIEW

The whole tractor is designed for excellent visibility all year round. Starting with the compact engine and sloping bonnet, you get the best front-down visibility on the market. The spacious six-post cabin has an upward curving windscreen and sweeping A-pillar for forward visibility, as well as a large rear window and a short roof for rear visibility. With the optional 180° rotating seat, this makes it ideal for special tasks such as forestry. We also offer the option of powerful work lights, back lights and upper lights so you can illuminate your work at all times.

2-LINE TRAILER BRAKES

The 5th generation A Series now includes the option of 2-line hydraulic or 2-line pneumatic trailer brakes to help you comply with EU regulations. The tractor automatically detects the type of brake system on the trailer, so you can use both single and dual line braked trailers.



AUTO TRACTION ON ALL MODELS

Valtra's famous Autotraction lets you drive your A Series without touching the clutch. With AutoTraction, you can stop your tractor simply by pushing brakes, and when you release the brakes, the tractor starts moving again. Autotraction is always available and ready to use, and you can turn it on and off using a sturdy rocker switch on the B pillar. When you need to, you can easily engage the clutch by pressing both brake pedals at speeds below 20 km/h. In addition, all A Series tractors come with Valtra's renowned shuttle transmission, including the integrated handbrake.

EASY HYDRAULIC CONTROL

All A Series models come with electrically controlled AutoControl power lift as standard, which delivers the optimal lifting capacity for the size of your tractor. With open centre hydraulics you get fast operation for both your front loader and your implements. Your tractor can be equipped with up to three remote valves and hydraulic flow control is also available as an option. The valves have quick couplings to let you attach and detach implements easily.



IMPROVED USER INTERFACE

The 5th generation A Series includes many improvements that make operating your tractor easier. These include an on/off switch for Autotraction, a new accelerator pedal and an improved rear powerlift switch.

HiTech4 models also include 4 wheel drive and Differential Lock switches, an external PTO on/off switch on the rear mudguard, and an electronic armrest for easy implement and front loader control.

VALTRA CONNECT

Valtra Connect is our telemetry solution that continuously records tractor activity and GPS location. You can access and view history and real time data on your mobile device anywhere, any time. Using this data, you and your Valtra service partner can predict maintenance needs, react faster to solve minor issues and avoid extra visits to your authorised service centre.

Valtra Connect is available for all A Series tractors, in both GL and HiTech4 models.



AGCO telemetry for customer
Fully customer and user driven
user experience



EASY-TO-USE VALTRA TRANSMISSIONS

The 5th generation A Series includes seven hard-working models, and all of them are available in GL versions with an easy-to-use mechanical transmission. The GL transmission is the best mechanical transmission ever seen in this size of tractor, and the 12 forward and 12 reverse gears are grouped into two to minimize lever changes.

HiTech4 electrical transmission is available for M chassis models, and we have also introduced HiTech2 transmissions for S chassis models. The HiTech2 transmission has 24 forward and 24 reverse gears with 6 synchronised gears in 2 ranges. It also includes Powershuttle with 2 speed powershift and speed matching. For added precision, the HiTech2 has a wide working range with 12 gears covering speeds between 7 and 17 km/h.

All three chassis can be equipped with a 12+12R transmission with

six speeds in each of the two speed ranges. HiTech4 electrically controlled transmission is available for the M chassis, and it features four ranges and four powershift gears, which can also be controlled automatically. It's also quick and easy to change group gears just by using a rocker switch. Full road speed can be reached with reduced engine speed to save fuel. All models come with four wheel drive and Autotractor as standard.

GL MODEL



HITECH

- Revolutionary Powershift : 6PS
- Open-centre hydraulics with 3 mechanical spools
- Middle spec armrest
- 2 models A105, A115



BUILD YOUR OWN VALTRA A SERIES

	MODEL	S CHASSIS A75 - 95	M CHASSIS A105 AND A115	L CHASSIS A125 AND A135
Engine power		75, 85, 95 hp	105, 115 hp	125, 135 hp
Engine		New STAGE V, 3-cylinder compact series engines from AGCO Power	New STAGE V 4-cylinder compact series engines from AGCO Power	New 4-cylinder Compact series engines from AGCO Power
Wheel base		2250 mm	2430 mm	2500 mm
Transmission	GL MODELS Mechanically controlled transmission	Valtra power shuttle transmission 12+12R or with HiTech2 24+24R	Valtra power shuttle transmission 12+12R	Valtra power shuttle transmission 12+12R
	HITECH 4 MODELS Electronically controlled transmission, with optional creeper		Valtra HiTech 4 with four step power shift; 16+16R transmission Electric control, no gear levers	

COMPACT STAGE V ENGINES

With the 5th generation A Series, you get more power from the advanced and compact engines. All medium to large chassis models with four cylinder engines now deliver 5 hp more than the previous generation.



The latest A Series models are powered by AGCO POWER MBTN-D5 engines. The three smallest models have three cylinder 3.3 litre engines, while the four biggest models have four cylinder, 4.4 litre engines. These user-friendly engines are packed with state-of-

the-art technology, like common rail 1600 bar fuel injection and four-valve cylinder heads, and have a service interval of 600 hours.

The compact engine means the bonnet can be smaller to give you a clear driving-direction view. The



Stage V exhaust after-treatment unit is located under the cabin for optimal visibility. The complete package includes DOC, DPF and SCR using AdBlue and because there is no Exhaust gas recirculation (EGR), the engine always uses fresh, clean air.

ALL-IN-ONE AFTER TREATMENT SYSTEM WITH

Diesel Oxidation Catalyst (DOC), Diesel Particulate Filter (DPF) and Selective Catalytic Reduction (SCR).

ALWAYS CONNECTED. ALWAYS IN CONTROL.

You work hard. You operate in challenging and diverse environments, running five jobs at once, putting in long hours and hauling distances. It's our job to make your tractor experience the best it can be. Our easy Connect, Care & Go service concept offers unrivalled practicality that eases the daily operation and maintenance without adding your costs. The best tractor experience is not just the machine, or the moment you purchase it – we, our partners and our vast dealer network are here to help you through the whole lifecycle of your tractor.

EASY DAILY SERVICE

You only need five quick checks to ensure an uninterrupted workday. All maintenance is easy to do.

- ✓ Visual check for tyre and oil leaks. Clean the grilles and radiator.
- ✓ Check the coolant level.
- ✓ Check the fuel and Add-Blue levels.
- ✓ Check the engine oil level.
- ✓ Check the transmission oil level.



PEACE OF MIND. IN YOUR HANDS.

We believe in a seamless connection between our customers, dealers, machines and the Valtra factory. When connected you can select the desired service and warranty packages to meet your expectations and requirements. We take care of you, so you can take care of your business.

Valtra Connect

www.valtraconnect.com



CONNECT

TRACTOR DATA,
INFORMATION
AND SERVICES.

STAY CONNECTED ANYWHERE, ANYTIME

By choosing Valtra you are connecting with a team of professionals that help you make the most of your business. You can contact your local support through our online customer portal which also gives you 24/7 access to tutorials, contractual information and services around your machines. The Valtra Connect telemetry solution records tractor activity and GPS movements, all the time. It can display history and real time data on your mobile device and you can access the data anywhere, anytime. Using this data, you and your Valtra service partner can anticipate maintenance needs, and react faster to solve minor issues and avoid extra visits to your authorised service centre.



CARE

FACTORY EXTENDED
WARRANTY.

TOTAL PEACE OF MIND

With Valtra Care extended warranty contracts you can find ultimate peace of mind and security against additional repair costs of non-wearing parts. Care allows you to set your overheads when you purchase your Valtra tractor, or when the standard warranty expires. They are flexible, offering three excess levels – 0€, 290€ or 590€ and are available up to 5 years or 6,000 hours.



GO

MAINTENANCE
CONTRACT.

MAXIMISE YOUR UPTIME

Fix your costs at the point of purchasing your Valtra machine and ensure the optimum performance, while guaranteeing efficiency and maximise the residual value of your machine! Valtra Go service contracts ensure regular and thorough maintenance which will prolong the reliable operation of your Valtra tractor. Maintenance costs are small compared to repair costs resulting from lack of maintenance. The Valtra Go service package includes all prescribed maintenance work bookable up to 10,000 hours for new and used machines.

FINANCIAL STABILITY WITH COST CONTROL

There aren't two farms that are exactly the same. They each have unique features and individual challenges. That is why we offer a flexible solution to help you stay on top of your costs.

A farm's cashflow can often be unpredictable and affected by many external factors. Seasons are different and prices vary, so staying on top of finances can be tricky. For the sake of being successful and having peace of mind, you need financial stability and full control of your costs.

Machinery and equipment are both a vital part and a major expense on any farm operation. You need different solutions for different

situations, such as flexible models of ownership.

The financing of a Valtra machine is now easier and more flexible than ever before. With the **Rent, Buy, Lease** programme offered by **AGCO Finance**, we are able to build a financing solution to meet your needs. Together with **Connect, Care & Go**, it is the best way to keep your business cost-effective and stable.

LET'S TALK MORE!



BUY

TRACTOR OWNERSHIP
WITH OPTIONAL
CONNECT, CARE AND GO



RENT

SHORT TERM RENTAL
WITH INCLUSIVE
SERVICES



LEASE

OPERATIONAL LEASE
WITH OR WITHOUT
SERVICE CONTRACT



YOUR OWN VALTRA DEALER

Your Valtra dealer represents the best tractor and implement expertise in your area. He understands the technical aspects of your tractor and the challenges you face. You can always turn to your dealer and receive the best service from consultancy, maintenance, repair and spare parts to the purchase of a new piece of equipment. Valtra dealers are independent entrepreneurs. AGCO audits its dealer representatives each year to ensure that you get the best possible service.

GENUINE PARTS AND HIGH QUALITY ACCESSORIES - ALWAYS AVAILABLE

Valtra's comprehensive spare parts service supplies the parts you need – as fast as by the next morning. This helps you keep your tractor productive during the busy ploughing and harvesting seasons. The AGCO Parts label ensures that you are getting original Valtra spare parts that have been thoroughly inspected and tested.



AGCO MAKES THEM UNBEATABLE, WE MAKE THEM AFFORDABLE.

At AGCO Finance we tailor your personal finance solution based on your cash flow and operation. Tell us how much you can afford on a monthly basis and we will create a flexible payment schedule according to your business needs, taking seasonal variations into account.

As a full service provider we also offer financing services such as leasing, rental

and insurance. Our services may vary between countries, so please check our website or your nearest dealer for the available offering.

VALTRA TEAM

Valtra Team is our customer magazine, published twice a year. Each issue contains useful information about the latest innovations and the most efficient working methods. You can also access the

magazine's archives online and read articles dating back to 2000.

AGCO ACADEMY

Tractors and related technologies, especially precision farming technologies, are developing at a rapid pace. The Valtra Academy continuously trains Valtra dealers and service technicians, so that the first-class and up-to-date expertise that you get from your Valtra dealer today will continue to meet your needs in the future.

VALTRA COLLECTION

The Valtra Collection offers high-quality clothing and accessories for work and leisure. The materials and details are carefully selected. The clothing reflects Valtra's modern design language, with light, yet extremely durable materials that combine style and functionality.



OPTION PACKAGES

Building your working machine with Valtra is an experience in itself. We offer hundreds of different accessories and options to choose from, adding up to an infinite number of different combinations. Because picking and choosing can be difficult, we now offer cost-effective option packages to help you with decision-making.

The option packages make it easier to specify a new tractor: nothing important is left out and the resale price of the tractor is also taken into account. When purchased as a package, the equipment is less expensive than when ordered separately. Best of all, the option packages do not limit you from selecting additional features from the Unlimited Studio.



1. COMFORT

The Comfort package takes your comfort zone to another level. This package is available for all A Series models. Options included in the Comfort package:

- 3 speed PTO 540/540E/1000 (HiTech4 only)
- 3 rear valves
- Suspended cab (HiTech4 only)
- Seat, Air Suspended
- Passenger seat
- Road lights with LED rear lights and upper lights
- 4 front + 4 rear work lights

3. CUSTOMIZE TO YOUR NEEDS



2. SELECT YOUR FRONT LOADER



1. ADD AN OPTION PACKAGE

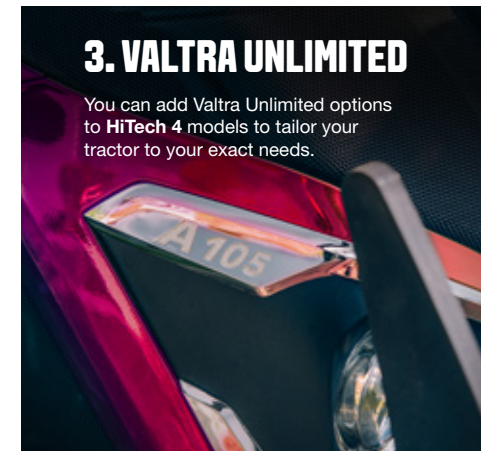


2. FRONT LOADERS

The A Series is excellent for front loader work, and the Front loader package is here to unlock that feature. The tractor's great visibility and good turning radius are perfectly complemented by this option package which includes factory fitted and tested front loader & subframe set.

3. VALTRA UNLIMITED

You can add Valtra Unlimited options to HiTech 4 models to tailor your tractor to your exact needs.



YOU FIND THE WORK. WE'LL FIND THE WAY.

Suits and tractors – those are two things that are just right when they're tailor-made. Whether it's because of changing work needs or wanting to stand out from the crowd, there's always a reason to go Unlimited. What do you need? What have you been dreaming of? Done and done. We make it happen. Available for HiTech 4 models.

With Valtra Unlimited tailor-made solutions your tractor will be a true multi-purpose vehicle. It's built according to specifications given by you, with the design, comfort and features you need to perform in any environment.

FORM, FUNCTION AND STYLE

Valtra Unlimited gives you more possibilities for versatility, from front linkages and PTO to special colours for municipality use. 5th generation A Series tractors are ready to work in reverse, and with Unlimited studio you can tailor your tractor to handle professional forest work, with features

including forest protection and timber handling equipment. You can also choose the cab finish and you can make special requests to take your individual tractor experience to a higher level.

FACTORY FITTED

All the accessories and equipment fitted by the Valtra Unlimited studio are covered by the factory warranty, and we also supply all the servicing and spare parts for them. The accessories and equipment available from the Unlimited Studio include additional lights, central lubrication, stereo systems and much more.

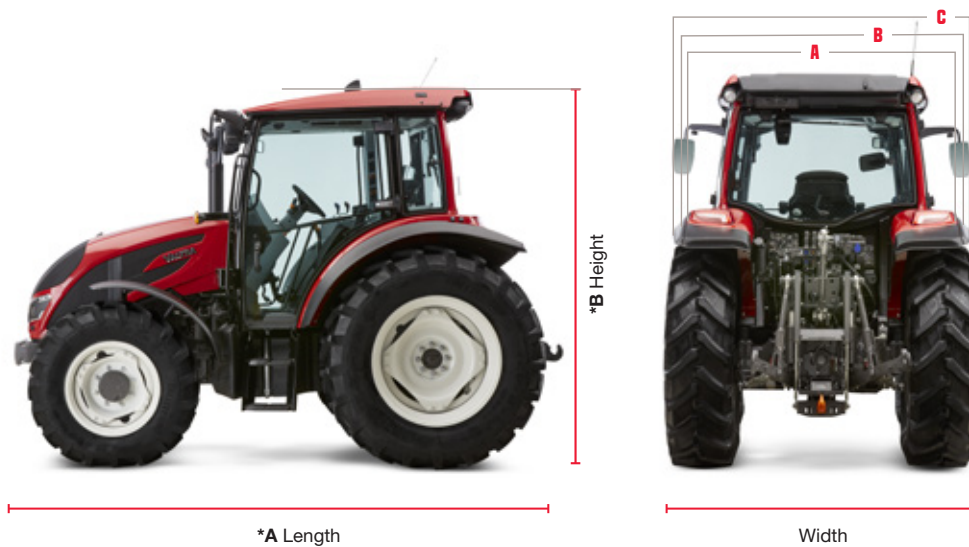


A SERIES TECHNICAL SPECIFICATIONS

75 - 135 HP



MODEL	MAX POWER		MAX. TORQUE NM
	HP	kW	STD
A75	75	56	315
A85	85	63	350
A95	95	70	355
A105	105	78	435
A115	115	86	455
A125	125	93	520
A135	135	100	540



Own working weight kg:	Max total weight kg:	Widths:	Mudguard widths:
A75 - A95: 3700	A75 - A95: 6200	A75 - A95: 2068-2207	Without extensions: 1858
A105-A115: 4300	A105-A115: 8500	A105-A115: 2068-2250	Narrow: 2028
A125-A135: 4540	A125-A135: 8500	A125-A135: 2139-2361	Wide: 2320





MODEL	SMALL A75-A95	MEDIUM A105-A115	LARGE A125-A135
DIMENSIONS			
Wheel base [mm]	2250	2430	2500
*A Length [mm] (without front weight)	4078	4367	4389
*A Length [mm] (with front weight)	4424	4713	4735
*B Height [mm] (min tyre SRI)	2664	2749	2774
*B Height [mm] (max tyre SRI)	2714	2799	2824
Height rear axle centre to top of standard roof [mm]	1964	1999	1999
Turning radius (track 1704mm) [m]	3,72	4,04	4,5
Ground clearance FRONT [mm] (max/min)	425/475	446/496	434/509
Ground clearance MID [mm] (max/min)	390/440	428/478	453/503
Ground clearance REAR [mm] (max/min)	440/490	456/506	459/534
Weight (empty tanks) [kg]	3700	4305	4540
Weight distribution F/R [%]		40/60	
Max front axle weight [kg]	3000	3500	3500
Max rear axle weight [kg]	5000	6400	6400
Max total weight [kg]	6200	8500	8500
Fuel capacity, basic [l]	147	175 (GL) / 180 (HT4)	175
Fuel capacity, steel tank [l]	150	183 (GL) / 160 (HT4)	183
AdBlue capacity [l]	13	13	13
Min tyre size	SRI 700 420/85R30 +320/85R24	SRI 750 420/85R34 + 340/85R24	SRI 750 420/85R34 + 340/85R24
Max tyre size	SRI 750 420/85R34 + 340/85R24	SRI 800 420/85R38 + 340/85R28	SRI 825 460/85R38 + 380/85R28

MODEL	SMALL A75-A95	MEDIUM A105-A115	LARGE A125-A135
ENGINE			
AGCO Power engine type	33 MBTN-D5	44 MBTN-D5	44 MBTN-D5
No of cylinders	3	4	4
Engine volume, (litres)	3,3	4,4	4,4
Engine speed at max power [r/min]	2000	2000	2000
Engine nominal speed [r/min]	2200	2200	2200
Engine speed at max torque [r/min]	1500	1500	1500
Idle speed [r/min]		850	
Low idle (shuttle lever on P) [r/min]		700	
Oil-change interval (h)		600	
Emission grade		Stage V	
Exhaust cleaning system		DOC + DPF + SCR	
TRANSMISSION			
Gear Lever models	12+12R	12+12R	12+12R
HT2	24+24R		
HT4		16+16R	
HT4 with creeper		32+32R	
STD speeds at 2200 r/min [km/h]		2,0 - 40	
Lowest creeper speed at 2200 r/min [km/h]		0,15	
HYDRAULICS			
Lifting power rear [max kN]	3000	4300	5200
Type of hydraulics		Open center	
Pump capacity max [l/min]	65	98	98
Transmission and hydraulic oils		Common oil	
Number of mechanical service valves rear	2 or 3		
Oil available for implement [litres]	20	32	32
PTO GearL Lever models			
Engagement type	Electrohydraulic		
540 / 1000 @ engine speed [r/min]	1920 / 1960		
540 / 540E / 1000 @ engine speed [r/min]	1920 / 1560 / 1960		
PTO HT4 models			
Engagement type	Electrohydraulic		
540 / 1000 @ engine speed [r/min]	1920 / 1960		
540 / 540E / 1000 @ engine speed [r/min]	1920 / 1560 / 1960		



You take on extremes each day.

You work in challenging environments, climates and landscapes.
You work hard, putting in long hours and hauling distances.
You work with jobs that ask for speed, power and precision.

To be in complete control, you deserve a visionary partner.
To be always connected, you need the smartest machine.

That is why you trust Valtra.

We work hard to make hard work easy.
We find new ways to solve your challenges.
We make machines that are tough on the outside
and smart on the inside.

Our machines are built to last.
Built to work. Built for you.

YOUR WORKING MACHINE

